

# Route your Cables three dimensional with **SPACECABLE**



**With SpaceCable you can quickly design your cable harness, verify its function and drive the downstream processes. You can create components and connectors, define different types of wires and cables for connections. You can group wires into cables, group cables into bundles, define shielding and assign properties such as material and color.**

The design of wire harnesses for modern electrical systems is becoming extremely complex while the competitive pressures facing manufacturers continue to multiply. Designers today are looking for ways to automate segments of the design process that allow them to adhere to strict time-to-market deadlines and increase the product quality.

SpaceCable provides a data-bridge between the electrical and mechanical world. This sharing of data provides accurate 3D digital virtual prototypes and allows designers to evaluate design decisions within the overall electromechanical environment.

This integrated, multi-discipline approach eliminates errors and accelerates design completion.

SpaceCable is used for the design of cabling systems for

electromechanical, aircraft, automotive, railway, shipbuilding and consumer goods industries. SpaceCable Harness and Cabling includes high-end routing tools with user definable and industry standard design rules. Once the harness or cable is routed and optimized the user can generate all the necessary drawings and manufacturing information including unfolding to produce nail-board drawings.

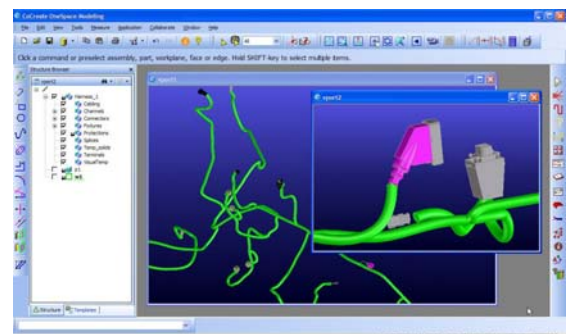
The Use of cable harness systems allows engineers to completely develop a design in the virtual state, rather than having to build prototypes and then route cables through the completed machine.

Virtual routing within your SpaceCable model can save hundreds of hours normally spent trying to find places to run wires once the rest of the mechanical design is complete.

Running as a module inside of PTC CoCreate Modeling, SpaceCable can import a netlist from a wiring diagram package for input.

Therefore, it is advisable to include the Wiring and Schematic Diagram Design package for designing the 2D schematic or wiring diagram to generate the input data for SpaceCable (all Electrical CAD packets could prepare the input for SpaceCable, if they are capable of exporting cable information's).

Wires, cables and splices are assigned to physical bundles. Physical design characteristics such as diameter, maximum bend radius and maximum wire lengths could be directly calculated inside SpaceCable. Another harnessing possibility is the direct design with the help of the special cabling functionality of SpaceCable.



Wires may be interactively routed between pins of physical components. Splices are created when multiple wires are connected together.

Multiple wires and cables may also be routed to a common pin, which create a multi-termination. Several cable types such as round, flat, shielded etc. may be defined.

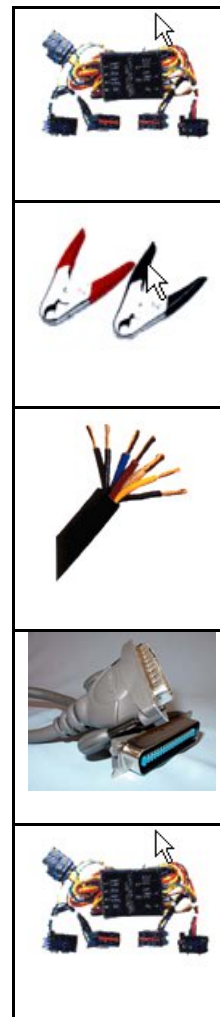
A general library of components is delivered together with SpaceCable. Special wires, cables, bundles and components can be added to the SpaceCable's library management system easily.

A designer may specify queries to search a library to select qualified parts. Electrical, physical and manufacturing design rules can be customized and checked to ensure that a company's best practices are followed

SpaceCable provides standard checks to verify that wires, splices and cables have been properly defined.

These checks identify problems prior to physical manufacturing. Production reports such as bill of materials (BOMs) and wire "From-To" lists are automatically generated and may be customized with user defined formats.

The 3D model can be automatically unfolded to generate accurate 2D formboard assembly drawings for harness manufacture. Automatic user-definable data extraction and formatting features generate reports and automatically annotate formboard drawings with speed and precision



Available Languages
English
German
Russian
Japanese

Ordering Information's	
M355L	SpaceCable License
M355Z	SpaceCable Subscription
M355T	SpaceCable introduction training (2 days)
M360T	SpaceCable advanced training (2 days)

Supported Platforms
Windows /XP, Vista, both for 32 and 64 bit

More information could be taken from <http://www.spacecable.com> , from e-mail [info@mip-group.com](mailto:info@mip-group.com) or from the following MIP offices

<u>MIP Nordic (Center)</u>	<u>MIP Turkey</u>	<u>MIP Hungary</u>	<u>MIP Belarus</u>
Viru 9-7 10140 Tallinn / ESTONIA Tel: +372 627 672 0 Fax: +372 627 672 1	Simitas Bloklari 5/21 Merter 34173 Istanbul / TURKEY Tel: +90 212 539 45 61 Fax: +90 212 539 45 28	Vörösmarty u. 53/2 1064 Budapest / HUNGARY Tel: +36 1 269 52 50 Fax: +36 1 269 52 51	Bretskaya str. 34-29 220099 Minsk/BELARUS Tel: +375 17 279 72 92 Fax: 375 17 279 72 92