

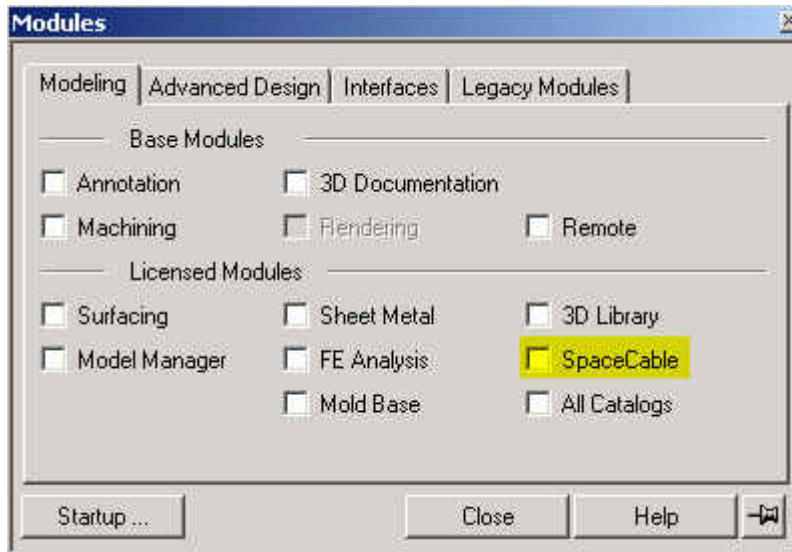
Document Type	Frequently Asked Questions
Base Product	OS Modeling 2004, 2005, 2006, 2007
Module	SpaceCable 2004, 2005, 2006, 2007

Question: How can we release SpaceCable license ?

In order to release SpaceCable license, SpaceCable must be added to the internal OneSpace Modeling application list under the Modules menu.

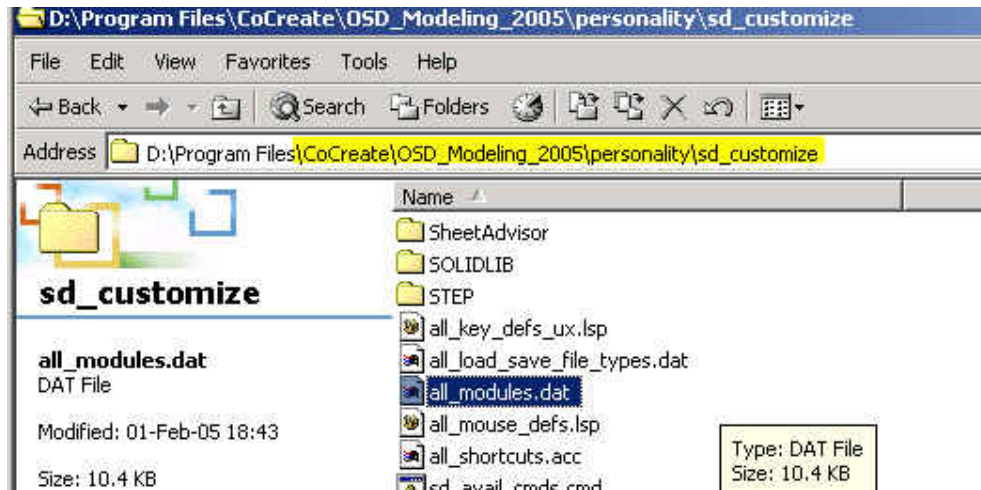


Once SpaceCable is recognized as an application, its license can be released, like any other CoCreate product.



How can we add SpaceCable to the list of applications ?

Find the “all_modules.dat” file under the .../personality/sd_customize directory.



Open the file and add following entry :

```
("SPACECABLE"  
:label "SpaceCable"  
:act-fun (mei::activate-spc)  
:deact-fun (mei::deactivate-spc)  
:startup :no )
```

See figure below :

```
("FE_ANALYSIS"  
:label "FE Analysis"  
:act-fun (ferrum::ferrum-activate-feanalysis "FEAnalysis"))
```

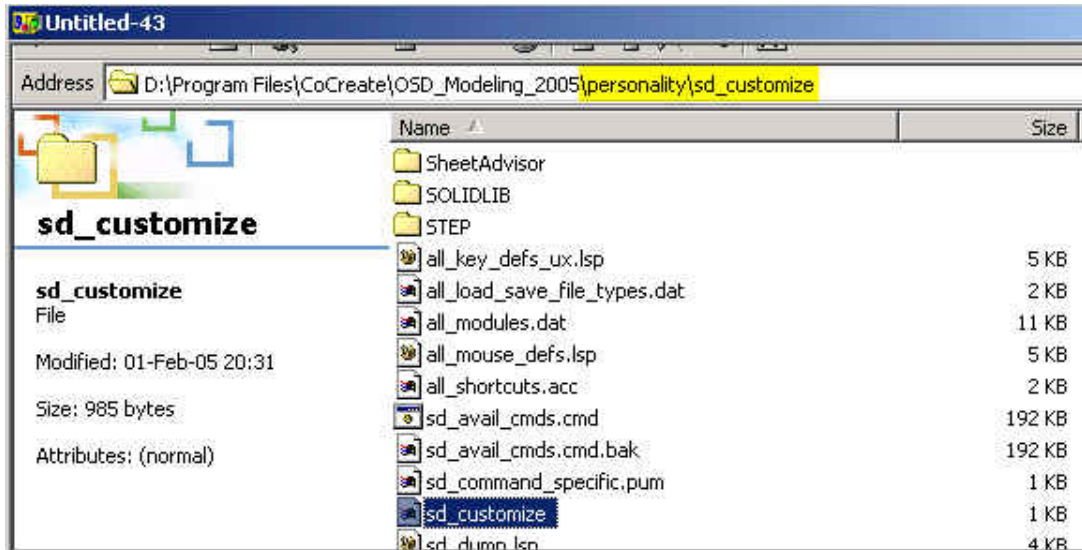
```
("SPACECABLE"  
:label "SpaceCable"  
:act-fun (mei::activate-spc)  
:deact-fun (mei::deactivate-spc)  
:startup :no  
)
```

```
("")
```

```
("MOLDBASEADVISOR"  
:label "Mold Base"  
:act-fun (activate-mold-base-advisor)  
:deact-fun (deactivate-mold-base-advisor))
```

Find your startup customization file :

E.g “sd_customize”



Open and add following text to your customization file, but don't forget to adapt in the following with bold typed directory paths to your own SpaceCable installation directory !

In the below example we used "c:/Program Files/CoCreate/SpaceCable_V13" as an example.



Cut & paste the following text to avoid typing errors.

Notice the single quotes ' and double quotes ". They must be put exactly in the same way like in the text below !

```

(use-package :oli)
(require ""c:/Program Files/CoCreate/SpaceCable_V13/define_package.lsp")

(defun activate-spc()

  (if (boundp 'MIP_SC::sc_path) ; already loaded once .. just activate
      (progn
        (sd-add-application-button "SpaceCable"
          :activateaction '(sd-switch-main-task-menu "SpaceCable")
          :cleanupaction '(sd-switch-main-task-menu "SolidDesigner"))

        (sd-module-activate "SPACECABLE")
        (MIP_SC::create_spacecable_main_menu) ; re-create the menus
      )
      ; else - load the binaries - SpaceCable activates itself automatically at load-time
      (progn
        (cd "c:/Program Files/CoCreate/SpaceCable_V13")
        (load "sc_load.lsp")
      )
  )
)

(defun deactivate-spc ()

  (if (sd-module-deactivate "SPACECABLE")
      (progn
        (sd-destroy-main-task-menu "SpaceCable")
        (sd-remove-application-button "SpaceCable")
        (return-from deactivate-spc t)
      )
  )
)

```

That's all.

Re-start OneSpace Modeling.

Go to Modules and select [SpaceCable]

Also notice that SpaceCable binaries will be loaded automatically first time you switch to SpaceCable application.